

Slimline Network Digital Advertising Display – Wi-Fi (NON-ANDROID)

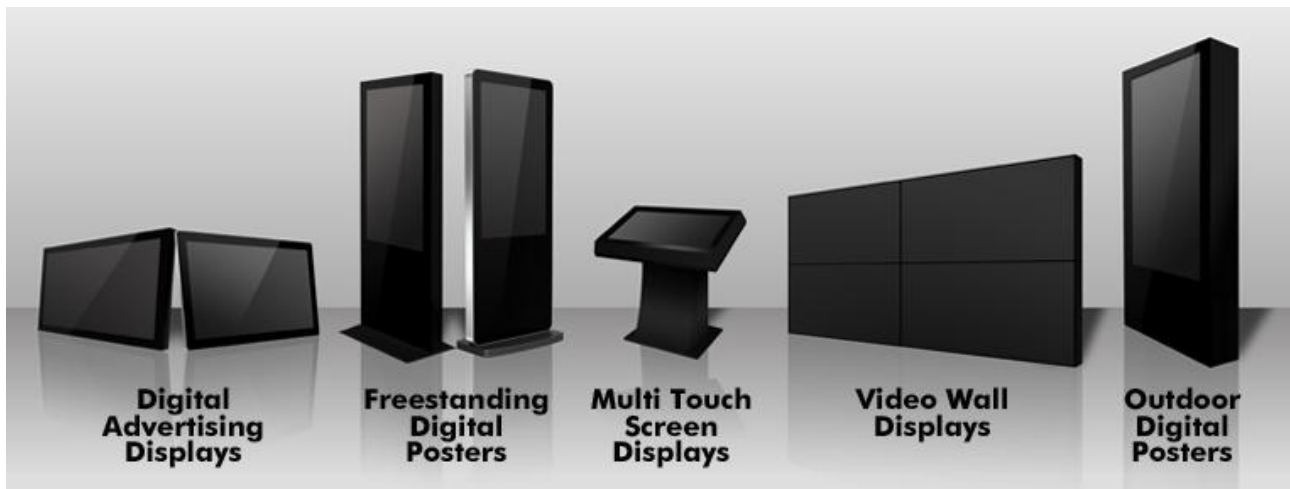
Quick Start User Manual



Manual Version PFW1.1q (NON-ANDROID)



Our Full Product Range



Safety Instructions



- Please keep the display away from any heat sources. Place the display in a stable and well-ventilated place.
- Please handle with care as product contains glass.
- The holes or openings on the display are designed for ventilation. Do not cover or block the ventilation holes or openings with any objects.
- Remove protective covering from the screen before you use the display.
- Shut off the power supply before cleaning. Use a soft lint-free cloth instead of a tissue to wipe the screen.
- You may use a glass cleaner to clean the product as required. However, never spray the cleaner directly onto the display surface.
- Do not attempt to repair this product yourself! Improper disassembly of the product may invalidate the warranty and lead to possible danger
- If you have a problem that cannot be solved using the "Troubleshooting" guidelines, please contact your supplier.

Contents:

1. Quick Start Guide - Hardware 4

2. Quick Start Guide – Software 11

3. F.A.Qs and Troubleshooting Guide 19

 3.1 How do I play PowerPoint presentations on my display? 19

 3.2 My media file does not fit properly on the screen 19

 3.3 My moving GIF files will not move..... 19

1. Quick Start Guide - Hardware

This is a quick start guide for setting up an All-in-One Network Screen on a Wi-Fi network. First you must set up your hardware.

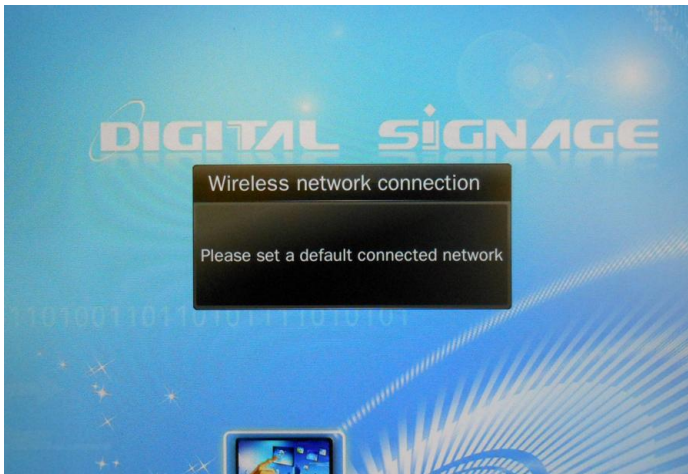
1 of 17. Begin by screwing in your screen's Wi-Fi aerial.



2 of 17. You can now mount your screen should you want to (see Hardware User Manual).

3 of 17. Connect your screen to the mains outlet; it should now power up.

4 of 17. Your screen will automatically attempt to connect to the internet via Wi-Fi; you will see the following message:



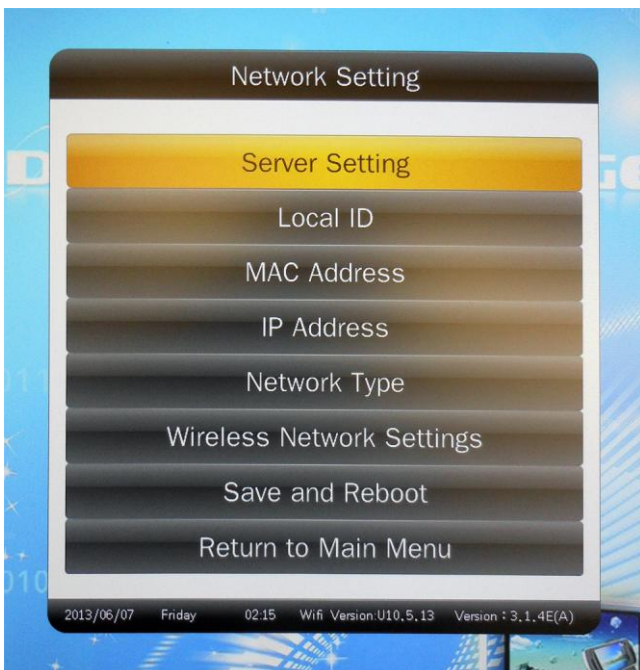
5 of 17. Your screen will then tell you that the connection has failed and start playing the default demo content.

6 of 17. Press “STOP” on your remote control.

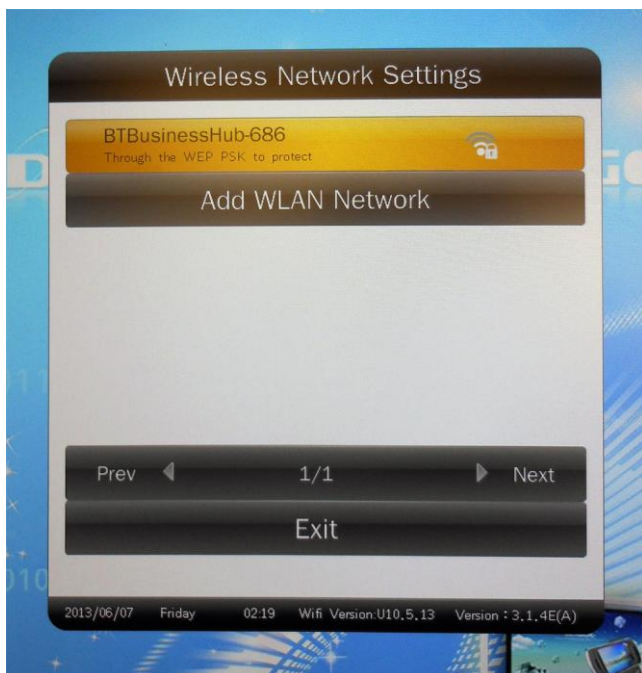
7 of 17. Now press “SETUP” to access the main menu



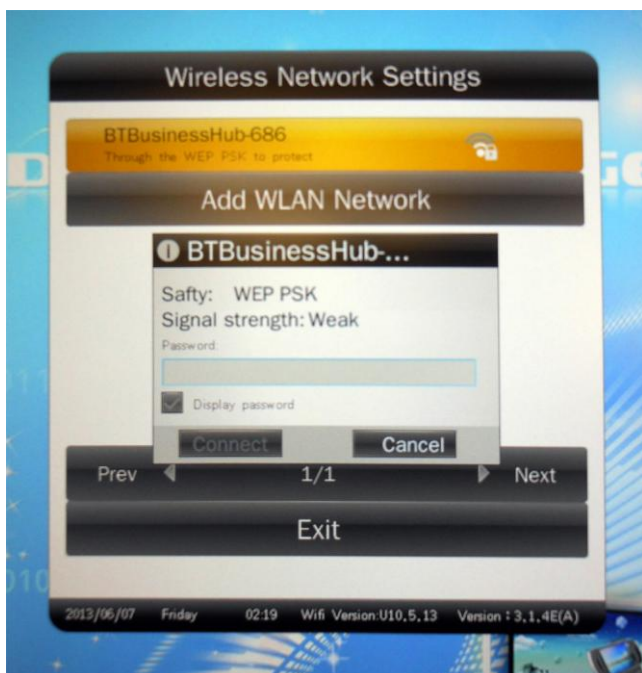
8 of 17. Then navigate to “Network Settings” and press “PLAY”



9 of 17. Next, using the remote control, navigate to “Wireless Network Settings” and select by pressing “PLAY”.



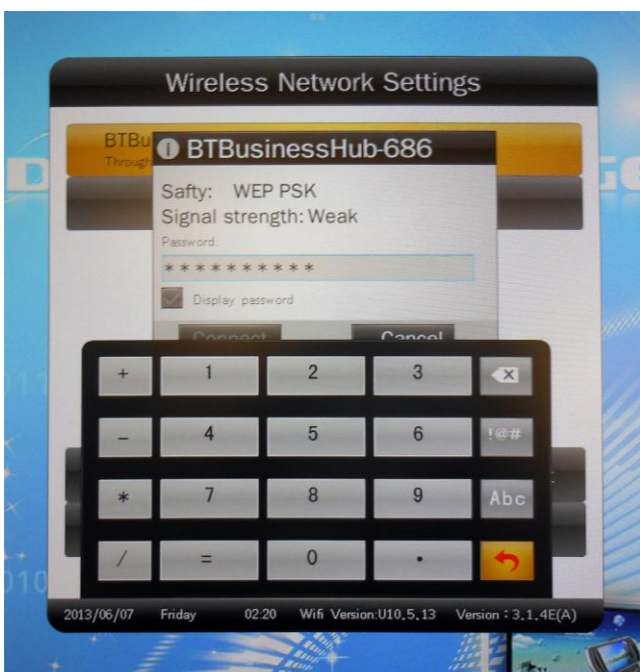
10 of 17. You should now see a list of Wi-Fi networks. Navigate to yours and press “PLAY”.



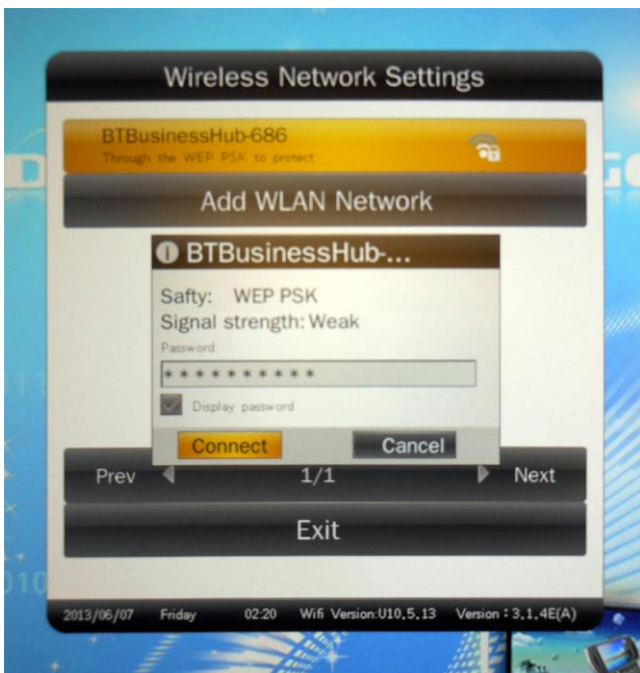
11 of 17. You will now be asked to enter your Wi-Fi network password. Press “PLAY” to bring up the on-screen keyboard.



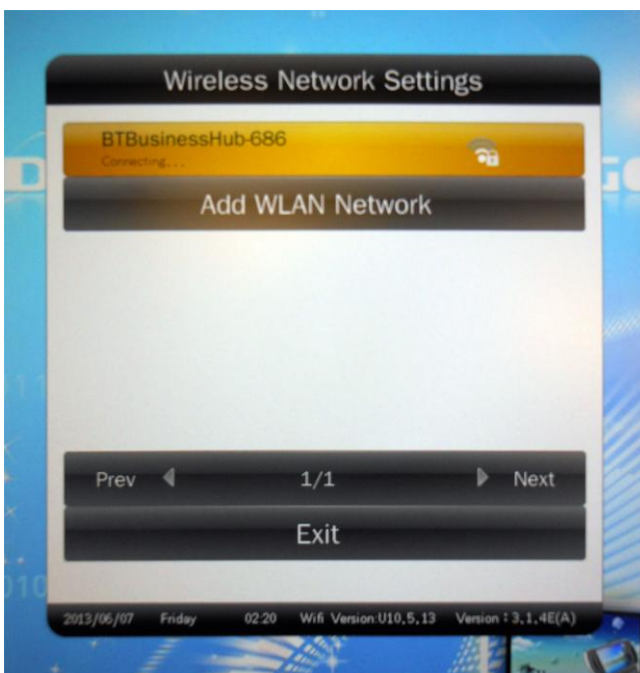
12 of 17. If your password contains numbers you can access the number keypad by highlighting “123” and pressing “PLAY”. Once you have entered your password highlight the “Enter” key and press “PLAY”.



13 of 17. Now highlight “Connect” and press “PLAY”.



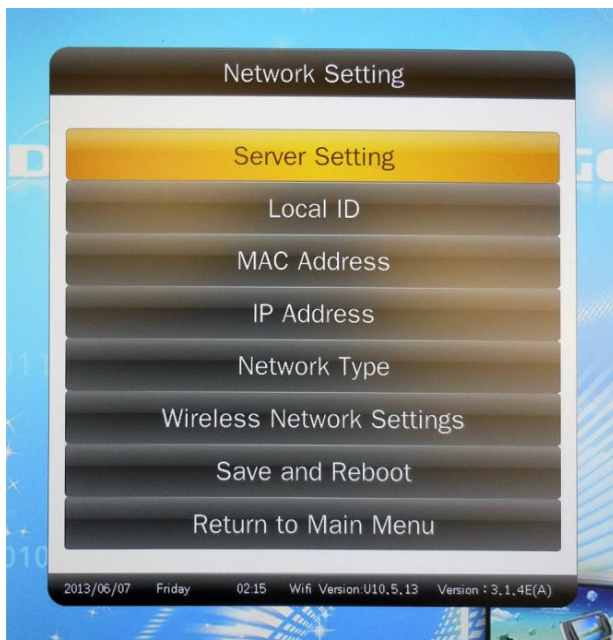
14 of 17. You will now see the following as your screen attempts to connect to your Wi-Fi network. The status should be “Connecting...”.



15 of 17. Once your screen has established a connection to your network the status will change to “Has connected”.



16 of 17. Finally, navigate to “Exit” and press “PLAY”. This will bring you back to the “Network Settings” menu. Navigate to “Save and Reboot” and press “PLAY”. This will save your network settings and ensure that every time your screen is powered up it will use these settings to connect to your Wi-Fi network.



17 of 17. Your screen is now ready to be updated via the CMS software. The default demo content will continue to play until you update your screen.

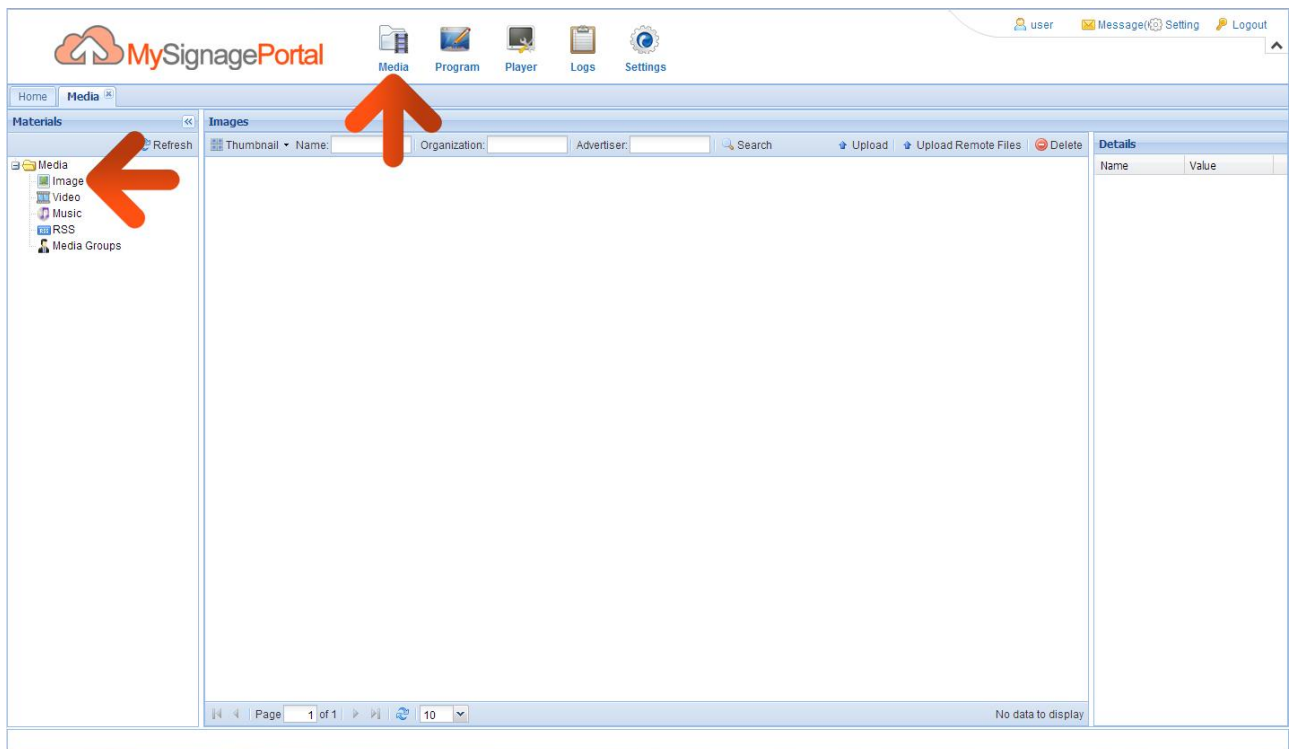
2. Quick Start Guide – Software

1 of 15. Begin by launching a web browser, we recommend Google Chrome however most popular browser should be compatible, then go to www.mysignageportal.com and click “Login” from the top navigation menu. Next, enter the username and password that you were provided with when you received your screen along with the security code.

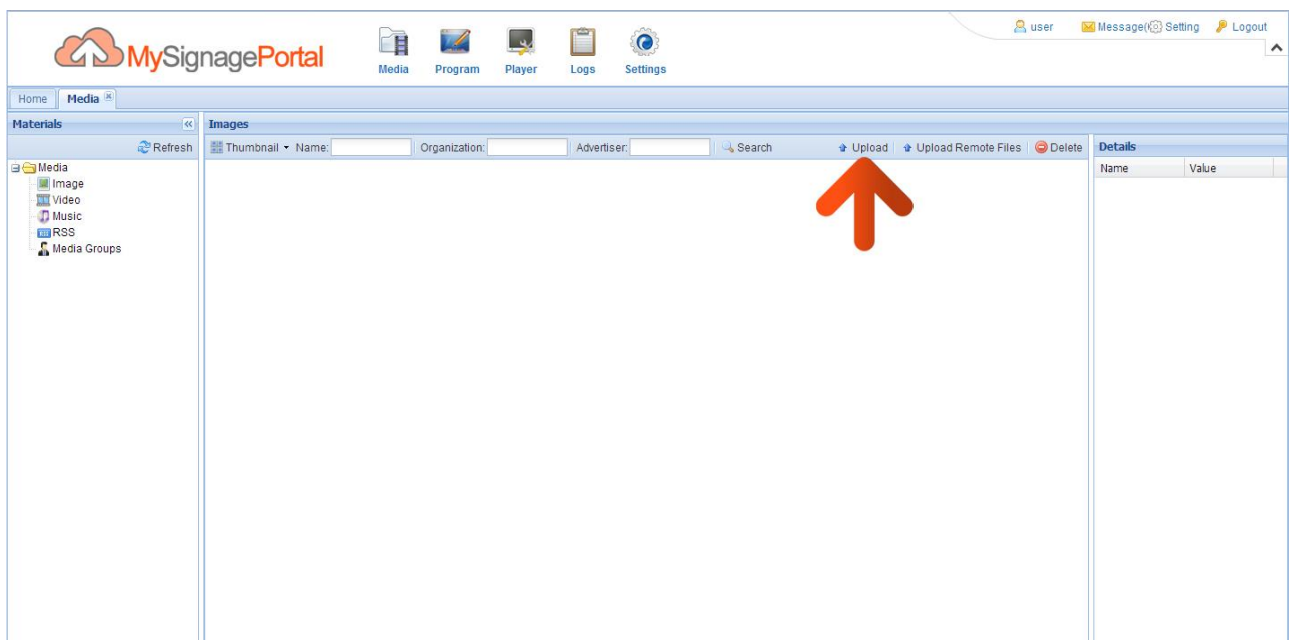


The screenshot shows the MySignagePortal login interface. At the top, there is a logo consisting of an orange cloud with a white upward arrow, followed by the text "MySignagePortal" in orange and grey. To the right of the logo is a navigation menu with links: "Home", "Getting Started", "Support", and "Login". Below the logo, the word "Login" is displayed in orange. A note in red text states: "(Note: Please ensure that you are using a compatible web browser; [CLICK HERE](#) to find out more)". The login form contains three input fields: "User Name" with the text "user", "Password" with masked characters "*****", and "Security Code" with the text "4115". To the right of the Security Code field is a "Regenerate" button. Below the input fields are two buttons: "Login" and "Reset". At the bottom of the form, a line of text reads: "By using this website you are agreeing to our [terms and conditions](#)."

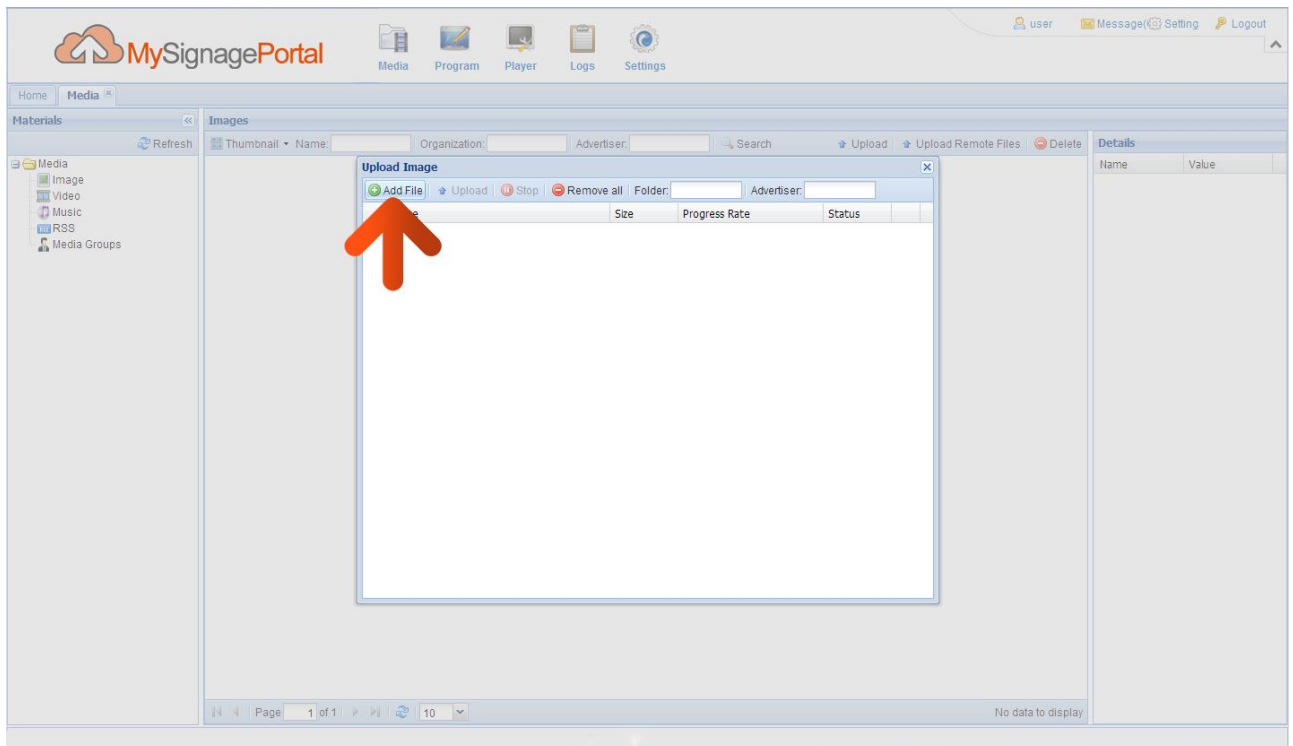
2 of 15. Once you have successfully logged in, upload two JPEG images. Begin by clicking on the “Media” icon on the Top Menu then click on “Image”.



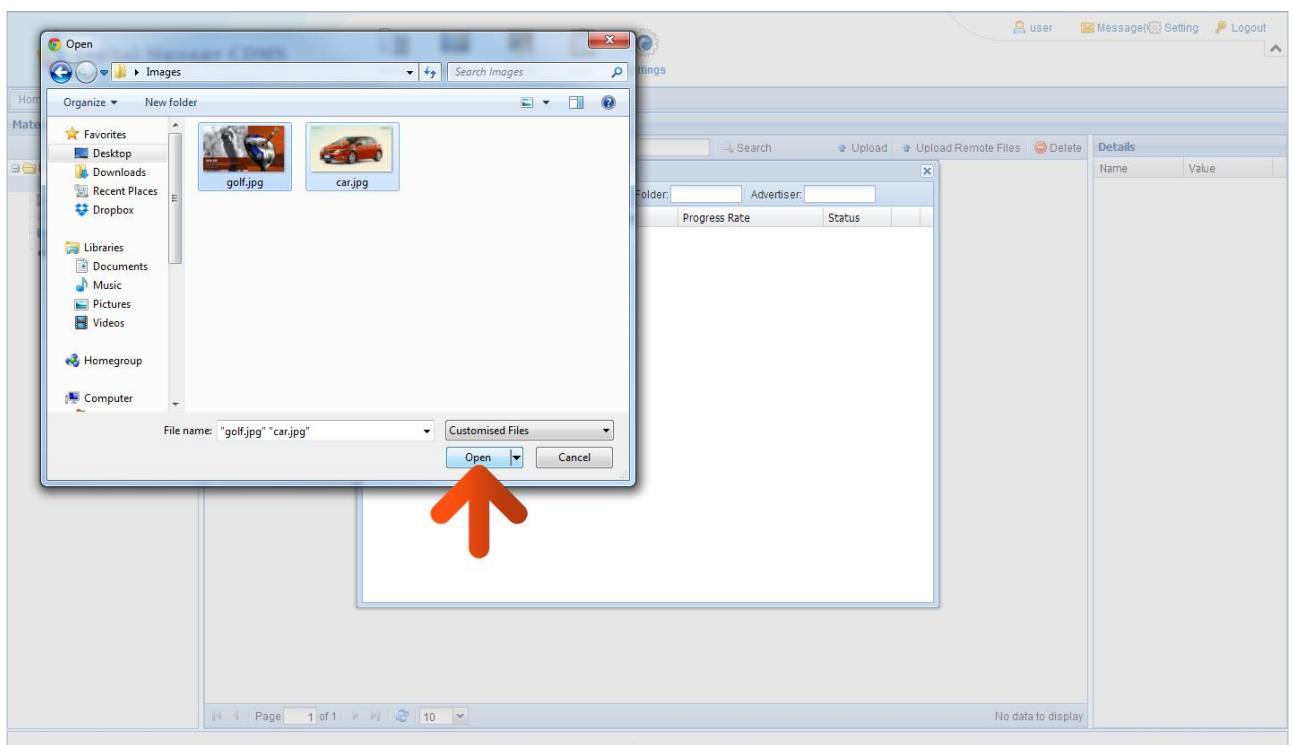
3 of 15. Then click on the “Upload” button.



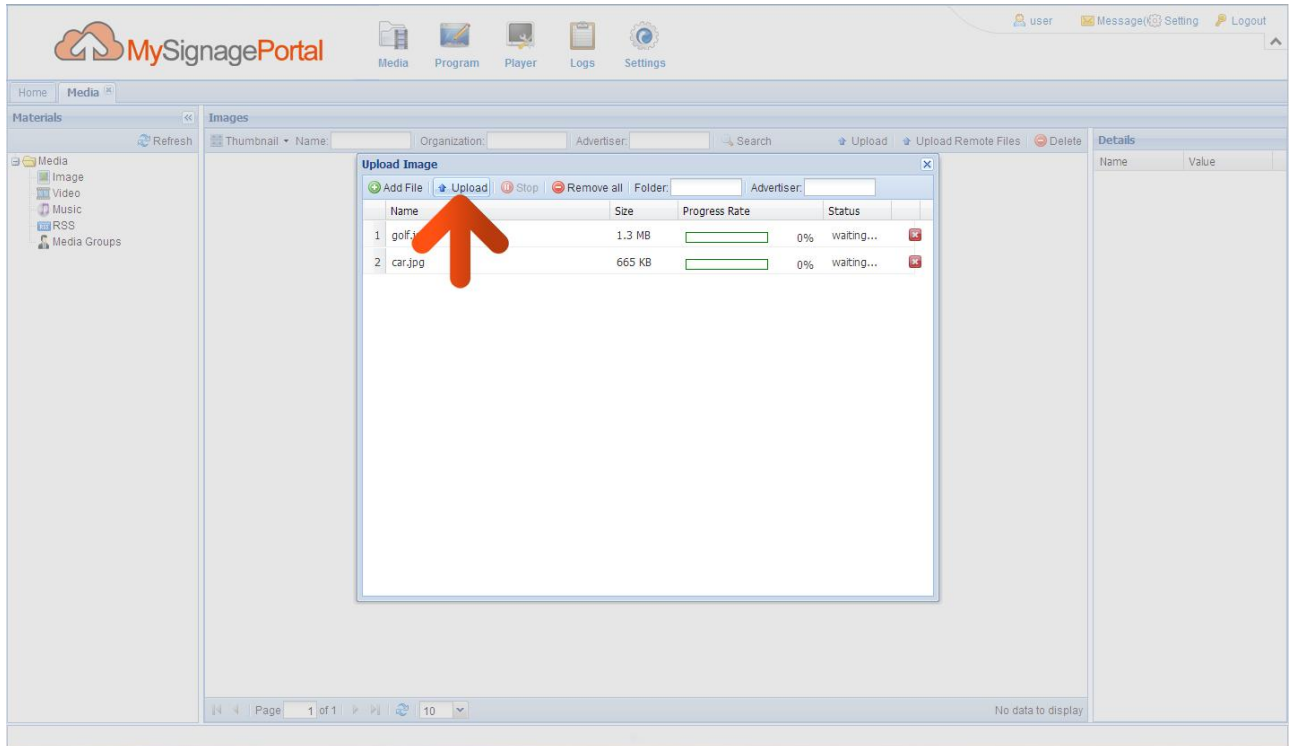
4 of 15. The Upload Image window will now appear. To begin uploading files please click the “Add Files” button.



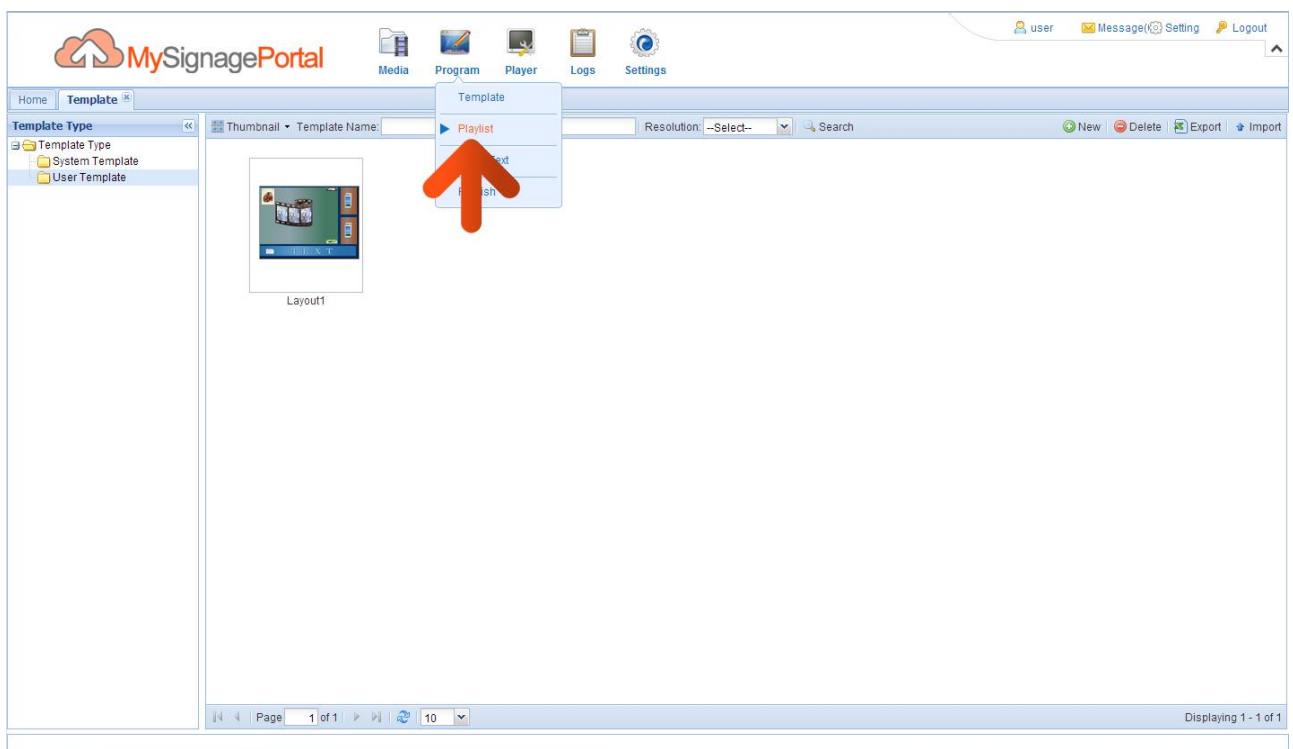
5 of 15. You can now browse through your files and select the JPEG images you wish to upload. Once you have selected the image files you wish to upload click “Open” in the browser window.



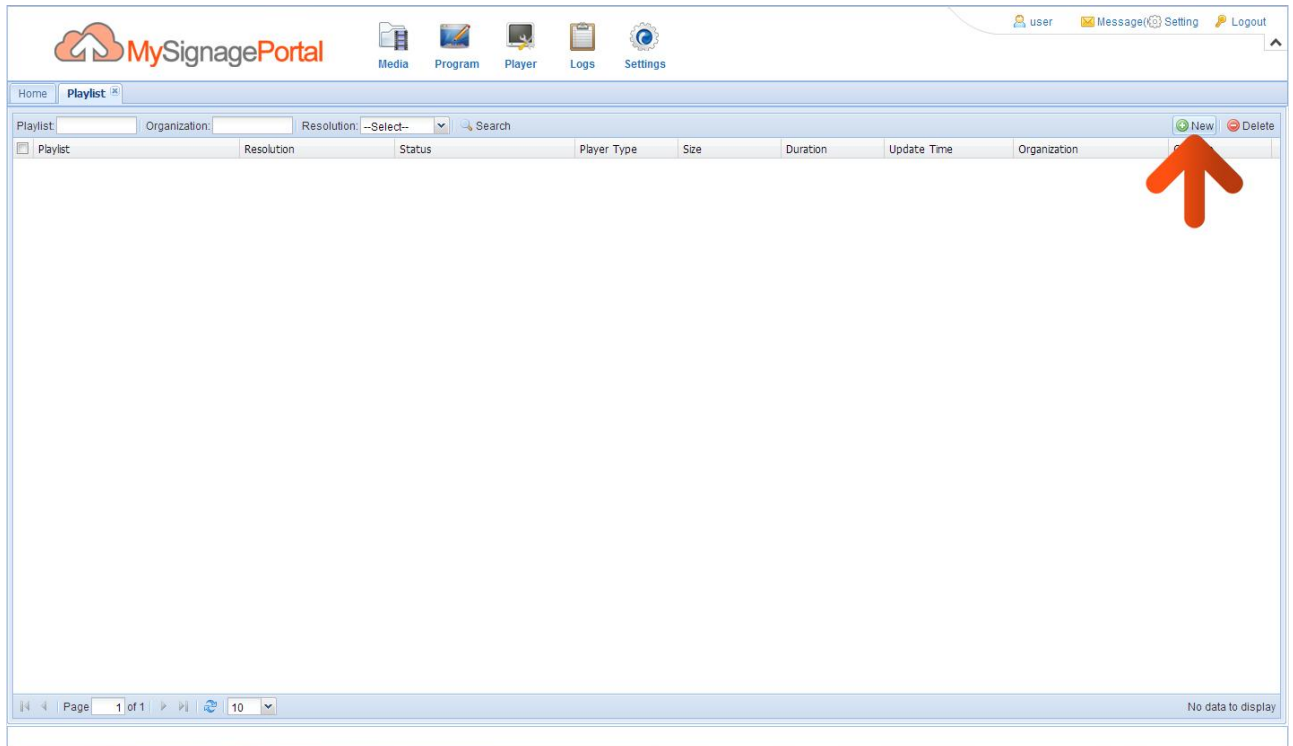
- 6 of 15. You will now have a list of all the images you selected to upload. Click the “Upload” button and wait until they have all finished uploading. You can track the progress of each file by the loading bar underneath the file name.



- 7 of 15. Once your images have uploaded, hover over the “Program” icon on the Top Menu then click on “Playlist”.

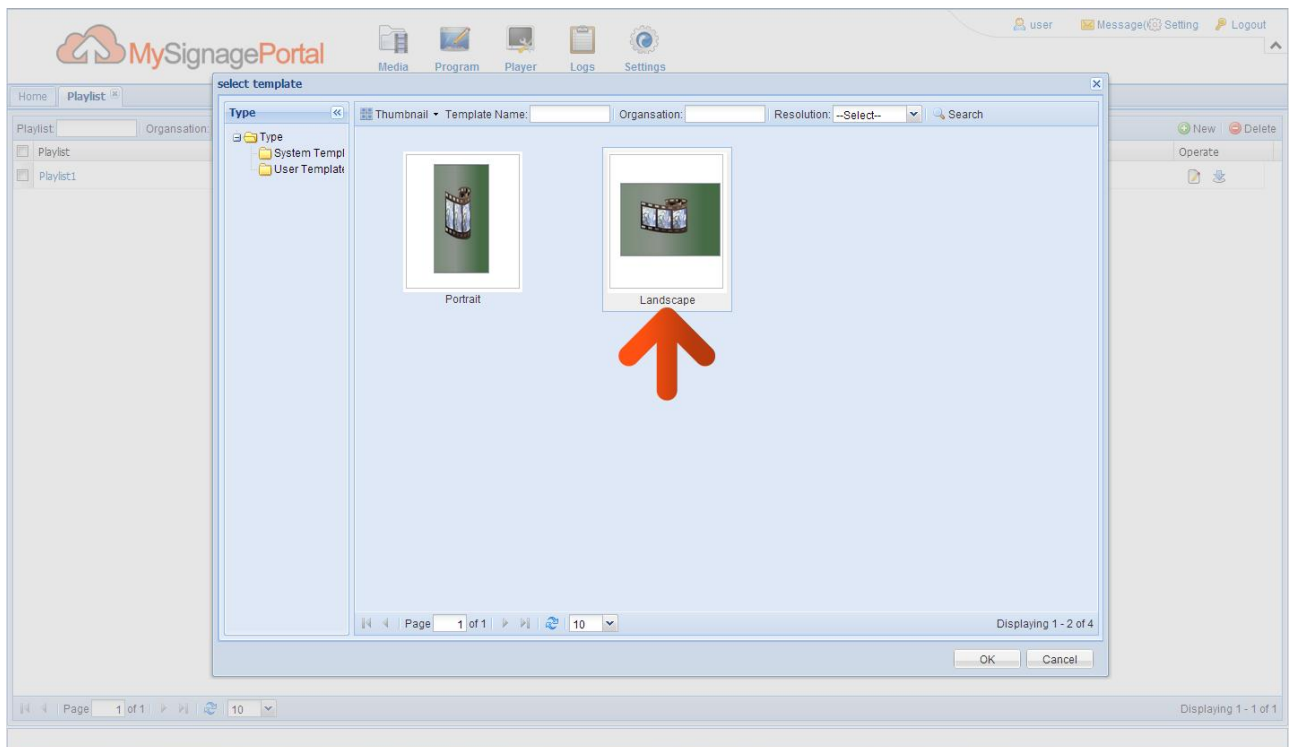


8 of 15. Click the “New” button.

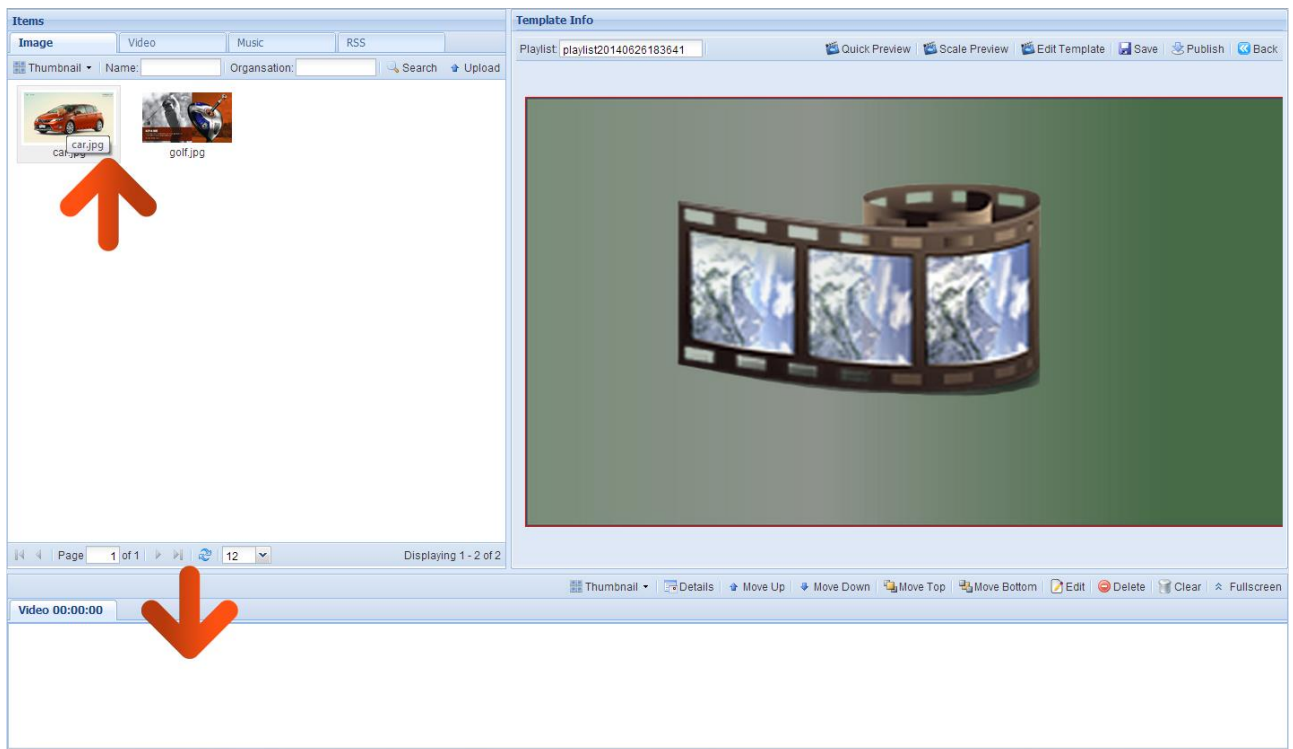


9 of 15. You then have to select a Template. This will bring up a grid of your pre-developed templates; select the one with a plain layout called “Horizontal” and click “OK”.

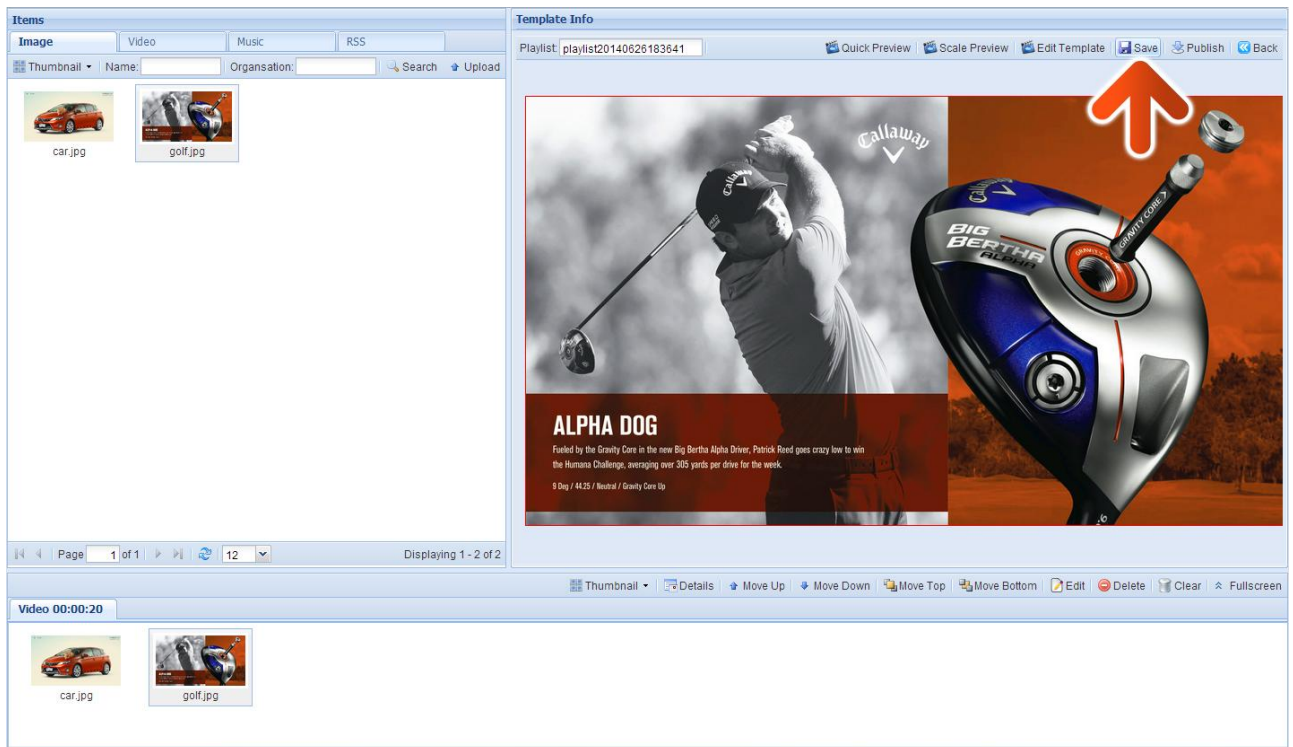
NOTE: If your screen’s “Screen Mode” has been changed to Vertical orientation you must select the “Vertical” template.



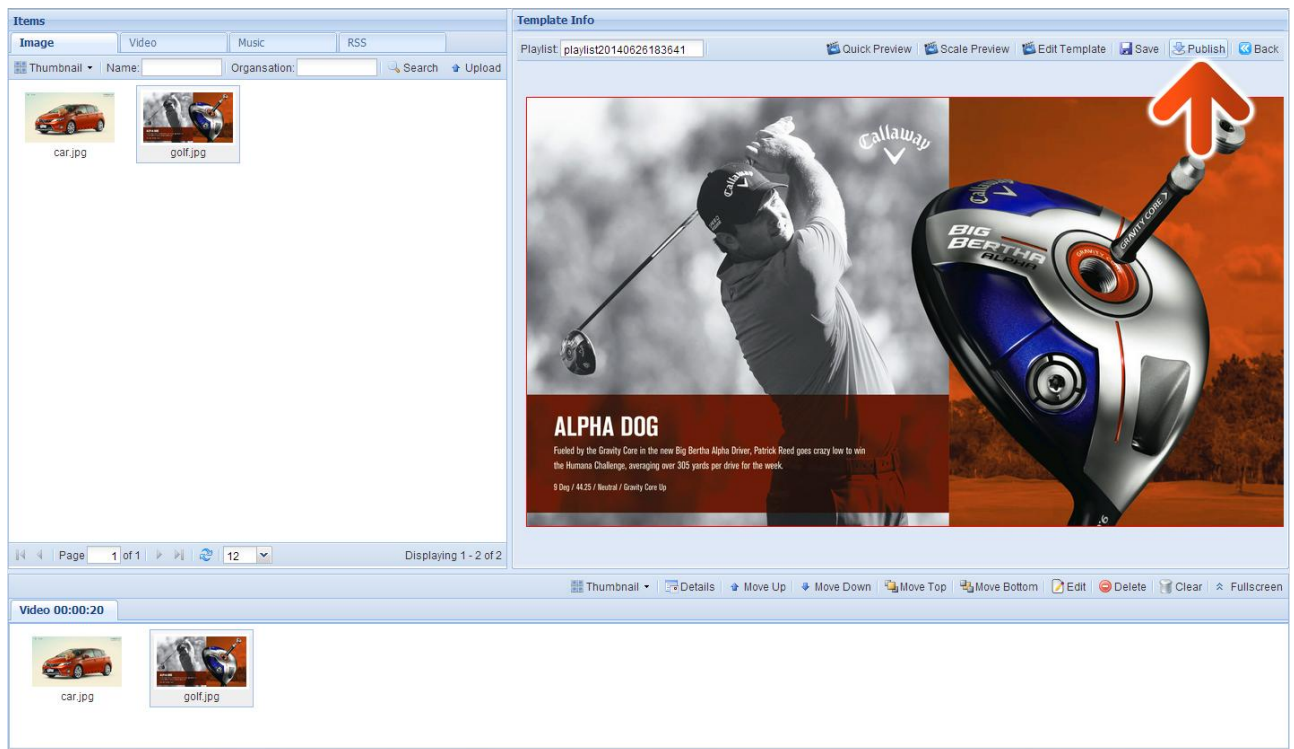
10 of 15. Drag and drop the images that you have uploaded into the bottom section.



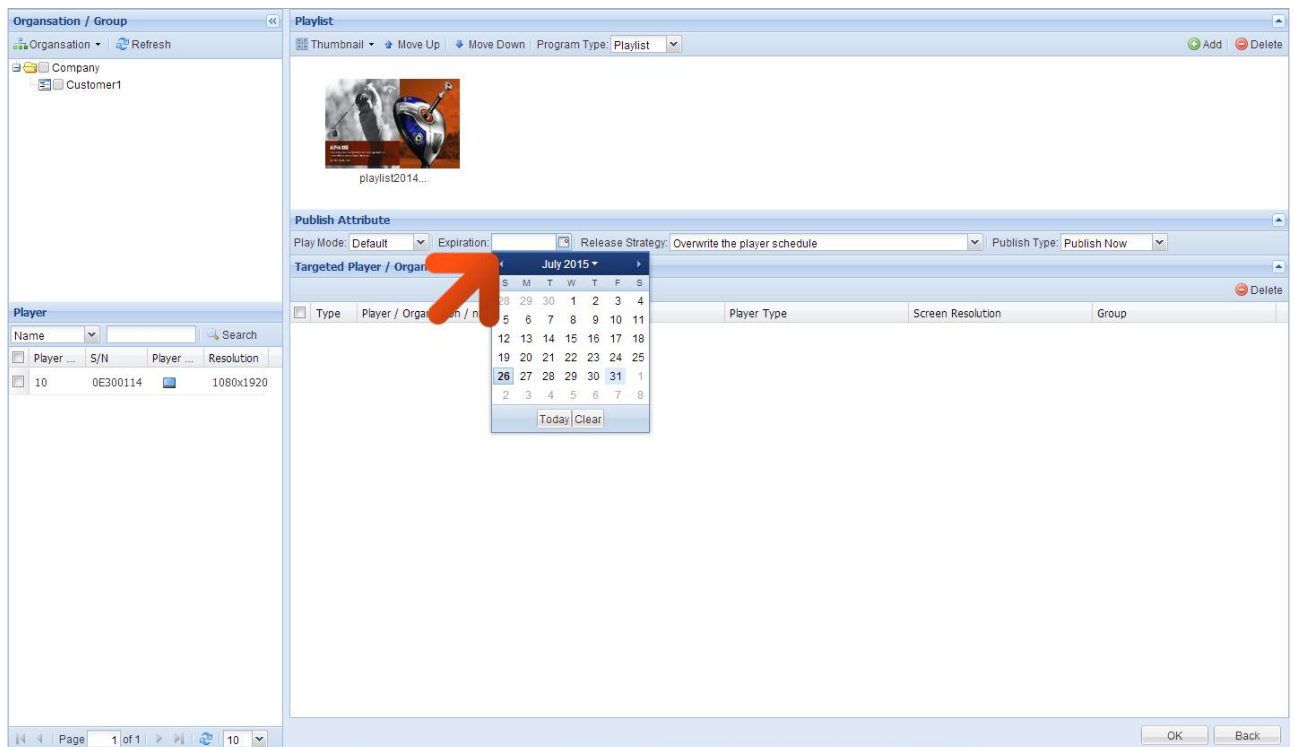
11 of 15. You will now see a list of the image files that this zone contains. Next, click “Save”.



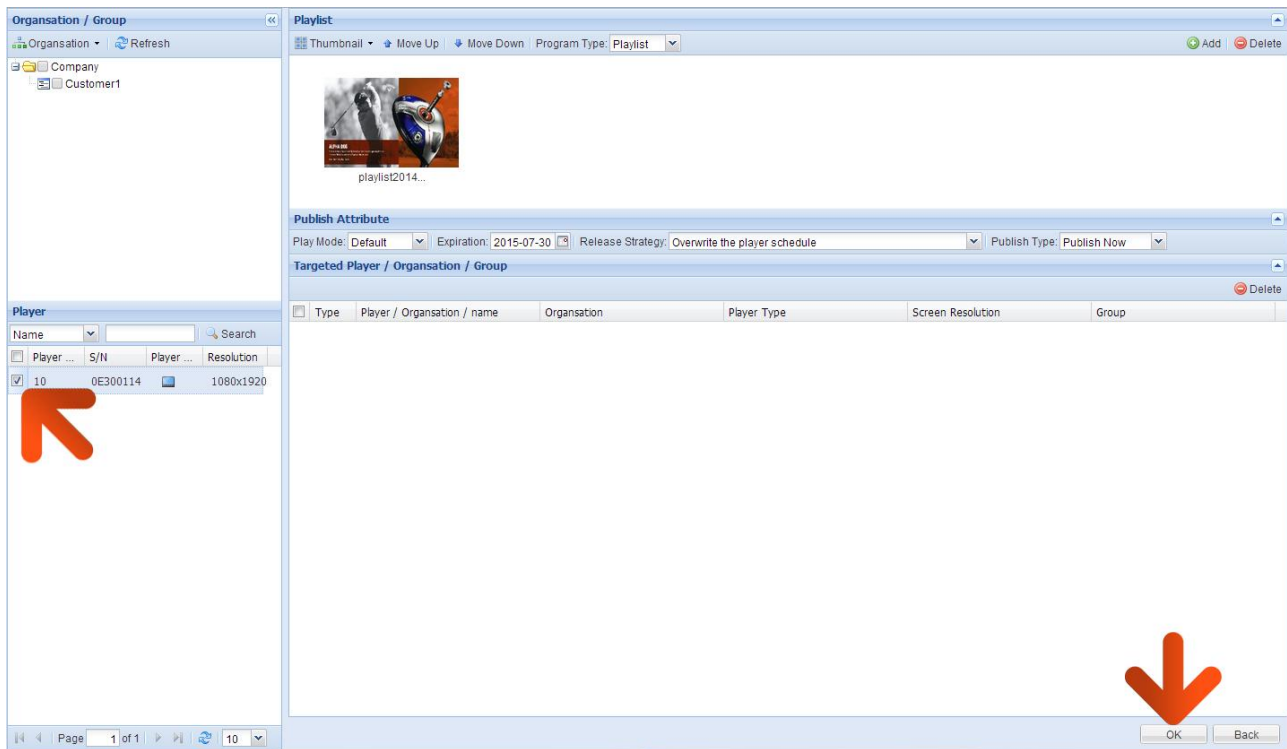
12 of 15. Then, click “Publish”.



13 of 15. Click the “Expiration” field and set an expiration date of at least one year on from the current date just in case you want to refer back to this playlist in the future.



14 of 15. Finally add the screens that you would like to Publish the Playlist to by clicking the checkbox next to the name of the screen. Then Click “OK”.



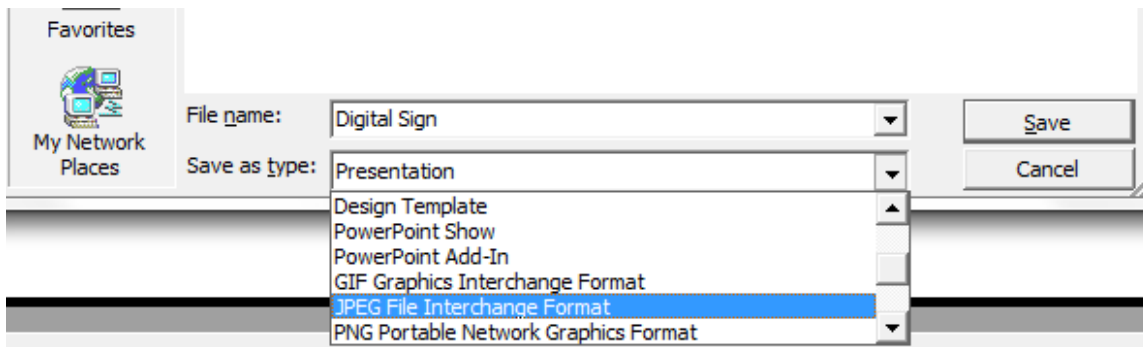
15 of 15. Check your screen; the two images should now be playing in a loop.

3. F.A.Qs and Troubleshooting Guide

3.1 How do I play PowerPoint presentations on my display?

You can save the PowerPoint presentation as a JPEG File Interchange Format (.JPG). Microsoft PowerPoint software allows the user to do this

- 1) Create or open a PowerPoint presentation.
- 2) Click File >Save As
- 3) Enter a File name
- 4) Click on “Save as type” scroll down and find the file extension “JPEG file interchange format”, as shown in the image below.



- 5) Click Save.
- 6) A message will appear asking if you would like to save all slides as JPEG's
- 7) Once you have selected your option, The JPEG images will be saved and are ready to use within a playlist or to upload to a storage device.

NOTE: For the best portrait resolution, you can use this PowerPoint Page Setup: Width 42.6cm; Height 24cm (16:9 Ratio)

3.2 My media file does not fit properly on the screen

This has happened because the file does not have a 16:9 aspect ratio (1920x1080). Please resize file to 1920x1080 pixels and try uploading the media onto the display once again.

3.3 My moving GIF files will not move.

As the screen recognises any .gif file as an image it will display the first frame of a moving gif for the allocated image display time.